

Roy W. Butler, ALI, Completes Bronze Winfrey Bust

NASHVILLE, TN—Roy W. Butler, ALI, renowned for his museum quality realistic bronze sculptures has been chosen to create a lifecast bronze bust of TV talk show host Oprah Winfrey's father, Vernon Winfrey. The portrait was recently completed at the Adonis Bronze Foundry in Utah and is ready for presentation.

The bronze sculpture is a surprise gift to Oprah by her father who still owns and operates a barbershop in Nashville.

Mr. Winfrey has had

his barbershop in the same location in Nashville for 39 years. He just celebrated his 71st birthday and continues to work at the shop 5-days a week.

Oprah was an announcer at the local NBC affiliate in Nashville before she went on to gain international recognition as a TV celebrity.

Roy will be featured in the prestigious SCULPTURE MAGAZINE in the near future.

Mr. Butler's work is in private and corporate collections around the world. See more of



Mr. Vernon Winfrey, by Roy W. Butler, ALI. Bronze lifecast portrait of Oprah Winfrey's father.

Roy's work here:
http://www.artmolds.com/lifecaster/Roy_Butler/index.htm

Inside this issue:

<i>Schoonraad's Art</i>	2
<i>Smile and Say 'Cheesecloth'</i>	2
<i>One Inch Equals Twenty Pounds</i>	2
<i>Dust Free Alginates Now Available</i>	3
<i>Neill Gorton Offers Make-up FX Courses</i>	3
<i>Fox Picks Hitchcock for 18 Body Casts</i>	3

Special points of interest:

- Throw out Your Plaster Bandages . . . There Is A New Technique In Town Pg 2.
- The Importance of A Dust Free Environment Pg. 3.
- ALI Certified Lifecasting Instructors Named Pg.4.

Mark Prent Releases Advanced Lifecasting Video

ST. ALBANS, VT — 'Fine Figure Finishing With Mark Prent's ADT System,' is Mark's latest video in his lifecasting video series. In it, Mark demonstrates all of his processes, using a cast Forton MG figure that he created in his earlier video, 'Success With Full Body Molds and Forton Castings'.

First he shows how to hollow out eye sockets in the cast Forton head and, using an ingenious molding and casting trick, he creates a natural looking open eyelid before inserting high qual-

ity prosthetic-grade glass eyes. Next, he demonstrates his own revolutionary approach to implanting individual hairs on a Forton scalp and life-like eyebrows. Finally, he shows how to join the finished head to the body and bring the figure to life with color applied using an airbrush. Though it is for advanced lifecasters it is very educational for beginners, too.

The video is \$54.95 and is available on line here: http://www.artmolds.com/index.cfm?u_cat=22



Schoonraad Art At The Intn'l Makeup Artists' Show



'Young Woman' by John Schoonraad, ALI

LONDON, UK- We all enjoyed John Schoonraad's, ALI, full body lifecast (see photo left), "Young Woman" on display in the upper mezzanine. It was the hit of the show. John used ArtMold's new tear resistant FiberGel E F/X grade alginate to create the mold.

Though it was a two-part mold, the front portion, from neck to toe, was entirely one piece. The second part was a small area on the back. It was through the back area that the model wriggled out.

John and his skilled team have created numerous lifecasts for

special effects including Lost in Space Mat Le Blanc, Patrick Stewart Scrooge, Kenneth Branagh Kate Winslet Jude & Quills, Kristen Scott Thomas English Patient & Richard 3rd, Lawrence Fishburne Lost in Space, Eric Bana Troy or Trojan Wars, Joaquim phoenix Gladiator , Sean Patrick Flannery Lost in Space , Brian Cox troy , Robbie Williams rock dj, Charlene Spatterti Elvis prosthetic , Rhona Mitre Tomb Raider , Christopher Lambert Highlander 1 & 4 , Donny Yen, Vin Diesel, Tom Hanks Saving Private Ryan, Ewan McGregor Blackhawk Down, Jeremy Piven, Jolie Richardson, Mat

Frewer Max Headroom, Lenny Henry Coast to Coast, Gladiator Russell Crow, Noah Emerik Beyond Borders , Rick Mayal, Ade Edmunson , Guest House Paradisio, Bruce Payne, Gary Oldman, Tomas Arana , Armund Asanta The Odyssey, Celia Imre , Gormanghast, Thomas Hardy , Kathleen Quinlan, Sean Pertwee, Event Horizon, Chris Jagger, Life Force, Nitin Sawney, Second Skin, John Goodman, The Borrowers, Adam Goldberg, Kevin Liberty X, Orlando Bloom, Brown, Bjork, pop videos, Giovanni Ribisi, Sam Neill and many others. You can see more of his work at www.lifecast.co.uk.

"More and more life casters are discarding their plaster bandages in favor of a new shell mold technique."

— **David Parvin, ALI**
David Parvin Studios

Smile and Say, 'Cheesecloth'

Dave Parvin, ALI says plaster bandages inhibit the quality of lifecast molds. Dave presented his class "The Newest Techniques in Lifecasting," to an overflow audience at the recent International Makeup Artist's Show in London in January.

David pointed out that plaster bandages are the cause of more mold dimpling and imperfections than for any other reason. That is because as bandages begin to

set and as the artist adds additional layers, a half set bandage underneath will deflect and not return to its original shape. In addition, bandages need to be tight against the alginate surface or air pockets develop further resulting in mold dimpling.

Dave's technique included using tear resistant FiberGel E F/X to create a front torso mold. He then sprayed Algislo on the alginate surface so that it re-

mained sticky. After which he took a 6-inch square of rolled cotton and touched it to the surface leaving behind just a whisper of cotton fibers.

He mixed Dental Plaster (very fast setting) to the consistency of cream and painted the entire surface of alginate and cotton fiber. Then Dave immediately laid down 8-inch strips of cheese

(Continued Page 4)

One Inch Equals Twenty Pounds

When casting a torso it is important to maintain dimensional stability. A body cast has a tendency to spread a bit when casting material is added to the mold. This is especially true around the hips and shoulders where a one inch spreading of the hips, as a result of the weight of the casting material, can give the appearance of adding twenty pounds of weight to the finished cast.

The shoulder area also has a tendency to spread as well. The solution to the problem is a simple one. It takes only a little bit more time. But by incorporating it into your technique you will save a great deal of frustration over a casting that does not come out as you expected . Use a caliper to take several measurements on the model's body and jot down the results. Once the mold is ready for casting use

a reverse caliper and verify that the critical points on the inside of the mold match your original measurements. If they do not you can make small adjustments by pulling in the mold. But, be careful you do not crease it.

Then use two bar clamps, one to hold the hip area and the other the shoulder area. You then may cast in peace.



Alginates Now Available in Dust-Free Formulas

SUMMIT, NJ – ArtMolds announced its latest innovation in alginate formulas. All formulas are now DUSTLESS. With growing concern throughout the US over workplace safety, as it relates to airborne powders, ArtMold's alginates are now manufactured utilizing a new dust-free process.

Though dust-free alginates have been available for dental grade impression materials, ArtMolds dust-free processing now make enables all grades of it alginates to be mixed with minimum of airborne dust. With a 3-to-1 mix ratio ArtMold's alginates con-

tinue to provide the highest value to quality molding material when compared to other alginates with only 2-to-1 mix ratios. Whether, its MoldGel, FiberGel or Hollywood Impressions you can be assured of the highest quality alginate available anywhere.

ArtMolds products are now widely available throughout the world. For distributor information please call toll free at 1-866-ARTMOLDS (278-665) International, please call 1-(908) 273-5401.



Dust free MoldGel is now available in 2-lb., 10-lb, 20-lb, and 50-lb containers

Neill Gorton Offers New Make-up FX Courses

Neill Gorton is one of Britain's leading FX artist with over 17 years professional experience, working with such famous faces as Sir Michael Cain and Johnny Depp, and on films like 'Saving Private Ryan,' 'From Hell,' and 'League of Extraordinary Gentlemen.'

According to Gorton, now the Neill Gorton Prosthetics Studio offers the best available education of its kind anywhere in the

UK or mainland Europe. The school shares a building with Neill's market leading company Millennium FX, allowing students an insight into current television and film projects and ensuring that the courses are always directly relevant to the industry.

The Studio runs two courses throughout the year, crafted to meet the needs of students and professionals alike:

Make-UpFX and Prosthetics

Creation (7 weeks) and Advanced Prosthetic Application (2 weeks),

Content is keep cutting edge, and gives participants as much 'hands on' experience as possible. Students leave with a technical journal, plus photographs and a video of their achievements.

For more information see: www.gortonstudio.com or call 01494 785 028. You may Email to: info@gortonstudio.com

"The best available (FX) education of its kind anywhere in the UK or mainland Europe."

— **Neill Gorton**
Millennium FX

Fox Picks Hitchcock for 18 Body Casts

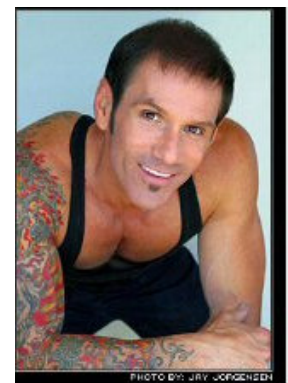
VENICE BEACH, CA — Artist Philip Hitchcock, ALI will be doing "before" body casts of the 24 women selected for the new FOX extreme makeover series THE SWAN. Each woman, after being transformed into a "swan," will receive the sculpture of her former self. She can then embrace it and keep it for posterity, or symbolically destroy it with a sledgehammer, an SUV or an explosive!! The show starts

airing in May. THE SWAN is a groundbreaking reality show that offers women the once-in-a-lifetime opportunity to undergo a FULL-LIFE MAKEOVER. Fox's team of Life Specialists - including Plastic Surgeons, Life Coaches, Therapists, Designers, and Stylists - will work with each contestant to make over their life - face, body, style - to give each the chance to see what they could be, if things really

were different. Philip used MoldGel SloSet for many of his molds.

Some of Hitchcock's work, life-castings of prominent WWE Wrestling stars will be on display in NYC, March 1, 2004 at Toys Are US on 5th Avenue.

You can see Philip's work online at: www.hitchcockdesigns.com



Philip Hitchcock, ALI



ARTMOLDS
THE ART OF IMITATING LIFE

Published by:
18 Bank Street
Summit, New Jersey 07901

Phone: 1-866-ARTMOLDS (278-6653)
Fax: 1-908-273-9256
Email: info@artmolds.com

The Art of Imitating Life.®



We're on the web
www.artmolds.com

About ArtMolds

ArtMolds is dedicated to the promotion and public awareness of the art of lifecasting. The company was founded by artists for artists where it manufactures lifecasting kits, supplies, alginates, and offers instructional material including books, video and workshops.

ArtMolds is the only alginate manufacture that is not a dental products formulator. It produces alginate formulas strictly for professional artists, prosthetics makers, special effects artists, taxidermists and mold makers. As a result, it places emphasis on high quality, creamy, extra strong and shrink resistance attributes. ArtMolds produces a formula for every application.

ALI Certified Lifecasting Instructors

The following individuals are ALI certified lifecasting instructors.

David Parvin — Denver CO	1-303-321-1074
Roy W. Butler — Nashville TN	1-615-292-4391
Philip Hitchcock — Venice Beach CA	1-310-396-0222
Jeff Colbert — Burbank CA	1-818 563-2366
Ed McCormick — Summit NJ	1-908 273-5401
Neill Gorton — Chesham UK	01494 785 028



Smile and Say 'Cheesecloth' continued from page 2

cloth on top of the plaster wetted mold starting on the outside edges and working inward.

Cheesecloth comes in a continuous strip folded in quarters. Dave emphasized that the cheesecloth remain folded in quarters. After he laid down one layer of cheesecloth he painted the top of the cheesecloth with additional diluted plaster.

Once that was done he took a strip of cheesecloth twisted it in to a rope-like form and dipped it into the plaster container to wet it with plaster. He then placed the piece on the outside edge as reinforcement. He continued adding to the edges until all edges were reinforced.

Because the plaster was extremely fast setting, by the time he finished the edges the shell

mold had set up.

Unlike the plaster bandage method where three overlapping layers are recommended, the cheesecloth method needed only one layer. That is because the liquid plaster was so much more thicker when set.

There are a number of benefits to using cheesecloth in lieu of plaster bandages.

The added benefit is that by gently painting the liquid plaster over the cheesecloth one can obtain a perfect surface adhesion without air bubbles commonly found when improperly applying plaster bandages.

Another important advantage to the cheesecloth method is that it is more than twice as fast as the plaster bandage application

method.

Finally, the average front torso requires 9-12-rolls of plaster bandages or about \$50.00 worth of material. Whereas the plaster bandage method uses about \$20.00 worth of material so that it is less than half the cost.

The west coast believes in Johnson & Johnson plaster gauze bandages, where as the preference in the East is Gypsona brand bandages. Both are of equal quality. The only difference is what you were taught to use determines your future materials choice.

The cheesecloth technique is a big leap for experienced lifecasters who believe they have their method down pat. Dave says experiment with cheesecloth . . . "You'll be a believer" after a few castings."



Lifecasting artists David Parvin (left) and Ed McCormick (right) standing behind 'Heather' ArtMolds demon-